

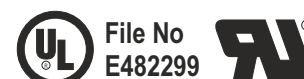
Product Technical Data Sheet - PXL Copper Tube Terminals

Description.

Partex PXL terminals are designed to ensure a safe and secure connection of your cable conductor. Each terminal has an inspection window to ensure the cable is safely inserted before crimping.

Specification.

Made from Copper to BS EN 1976:1998.
Annealed to ASTM B111 C11000
Electroplated Tin coating.



To fit standard electrical cables to BS6360.

Meets the compression requirements of BS EN 61238.1:2003

Maximum temperature 180°C

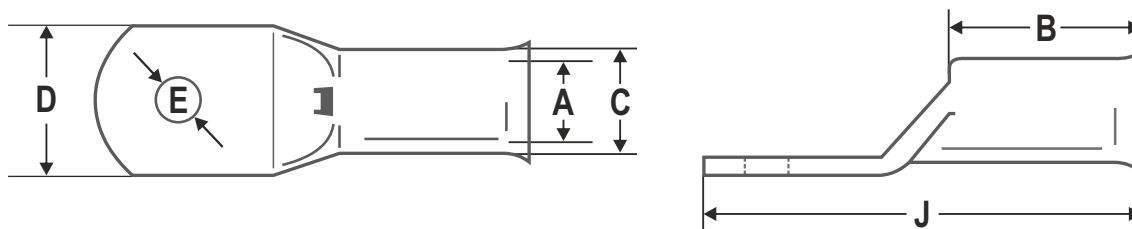


Partex Marking Systems (UK) LTD

61-64 Station Road, Coleshill, Birmingham B46 1JT

Tel: 01675 463670 Fax: 01675 463520 Email: sales@partex.co.uk

PXL Dimensional Data

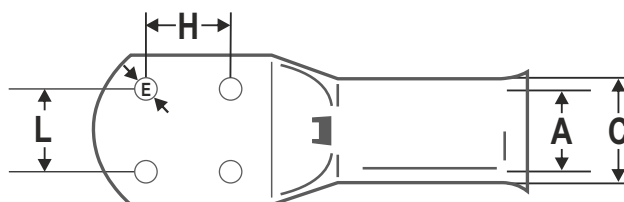


Part Number	Cable Size (mm ²)	E Stud Hole Dia Ø (mm)	A ID (mm)	C OD (mm)	D Palm Width (mm)	B Barrel Length (mm)	J Total Length (mm)
PXL 1.5-6	1.5	6.0	1.8	3.7	8.0	5.5	19.0
PXL 2.5-6	2.5	6.0	2.4	4.0	9.5	8.0	21.5
PXL 4-6	4.0	6.0	3.1	4.8	9.5	8.0	21.0
PXL 4-8	4.0	8.0	3.1	4.8	11.0	8.0	25.0
PXL 6-6	6.0	6.0	3.8	5.5	10.5	10.0	27.0
PXL 6-8	6.0	8.0	3.8	5.5	11.0	10.0	27.0
PXL 6-10	6.0	10.0	3.8	5.5	14.5	10.0	32.0
PXL 10-6	10.0	6.0	4.5	6.2	11.0	10.0	25.5
PXL 10-8	10.0	8.0	4.5	6.2	11.5	10.0	25.5
PXL 10-10	10.0	10.0	4.7	7.1	14.5	10.0	32.0
PXL 10-12	10.0	12.0	4.7	7.1	14.5	10.0	36.0
PXL 16-6	16.0	6.0	5.4	7.1	11.5	13.0	31.0
PXL 16-8	16.0	8.0	5.4	7.1	11.5	13.0	31.0
PXL 16-10	16.0	10.0	5.5	7.9	14.5	13.0	35.0
PXL 16-12	16.0	12.0	5.5	7.9	18.0	13.0	39.0
PXL 25-6	25.0	6.0	6.8	8.8	12.5	14.0	33.0
PXL 25-8	25.0	8.0	6.8	8.8	13.0	14.0	33.0
PXL 25-10	25.0	10.0	6.8	8.8	14.5	14.0	36.5
PXL 25-12	25.0	12.0	6.8	8.8	16.5	14.0	40.0
PXL 35-6	35.0	6.0	8.2	15.0	15.0	14.0	36.0
PXL 35-8	35.0	8.0	8.2	15.0	15.0	14.0	36.0
PXL 35-10	35.0	10.0	8.2	16.0	16.0	14.0	39.0
PXL 35-12	35.0	12.0	8.2	21.0	21.0	15.5	47.0
PXL 50-8	50.0	8.0	9.5	12.4	18.0	18.0	45.0
PXL 50-10	50.0	10.0	9.5	12.4	18.0	18.0	45.0
PXL 50-12	50.0	12.0	9.5	12.4	21.0	22.0	52.0
PXL 50-16	50.0	16.0	9.5	12.4	22.0	18.0	52.0
PXL 70-8	70.0	8.0	11.2	14.7	21.0	20.0	52.0
PXL 70-10	70.0	10.0	11.2	14.7	21.0	20.0	52.0
PXL 70-12	70.0	12.0	11.2	14.7	21.0	20.0	52.0
PXL 70-16	70.0	16.0	11.2	14.7	25.0	20.0	52.0
PXL 95-8	95.0	8.0	13.5	17.4	25.0	22.0	57.0
PXL 95-10	95.0	10.0	13.5	17.4	25.0	22.0	57.0
PXL 95-12	95.0	12.0	13.5	17.4	25.0	22.0	57.0
PXL 95-16	95.0	16.0	13.5	17.4	26.0	22.0	60.0

Continued...

Part Number	Cable Size (mm ²)	E Stud Hole Dia Ø (mm)	A ID (mm)	C OD (mm)	D Palm Width (mm)	B Barrel Length (mm)	J Total Length (mm)
PXL 120-10	120.0	10.0	15.0	19.4	28.0	24.0	63.0
PXL 120-12	120.0	12.0	15.0	19.4	28.0	24.0	63.0
PXL 120-14	120.0	14.0	15.0	19.4	28.0	24.0	63.0
PXL 120-16	120.0	16.0	15.0	19.4	28.0	24.0	63.0
PXL 150-10	150.0	10.0	16.5	21.2	30.5	29.0	71.0
PXL 150-12	150.0	12.0	16.5	21.2	30.5	29.0	71.0
PXL 150-16	150.0	16.0	16.5	21.2	30.5	29.0	71.0
PXL 185-10	185.0	10.0	18.5	23.5	34.0	34.0	79.0
PXL 185-12	185.0	12.0	18.5	23.5	34.0	34.0	79.0
PXL 185-14	185.0	14.0	18.5	23.5	34.0	34.0	79.0
PXL 185-16	185.0	16.0	18.5	23.5	34.0	34.0	79.0
PXL 240-10	240.0	10.0	21.0	26.5	38.0	39.0	93.0
PXL 240-12	240.0	12.0	21.0	26.5	38.0	39.0	93.0
PXL 240-14	240.0	14.0	21.0	26.5	38.0	39.0	93.0
PXL 240-16	240.0	16.0	21.0	26.5	38.0	39.0	93.0
PXL 300-10	300.0	10.0	23.5	30.0	43.0	44.0	101.0
PXL 300-12	300.0	12.0	23.5	30.0	43.0	44.0	101.0
PXL 300-14	300.0	14.0	23.5	30.0	43.0	44.0	101.0
PXL 300-16	300.0	16.0	23.5	30.0	43.0	44.0	101.0
PXL 300-20	300.0	20.0	23.5	30.0	43.0	44.0	101.0
PXL 400-12	400.0	12.0	26.8	34.8	50.0	47.0	116.0
PXL 400-16	400.0	16.0	26.8	34.8	50.0	47.0	116.0
PXL 400-20	400.0	20.0	26.8	34.8	50.0	47.0	116.0
PXL 500-20	500.0	20.0	30.0	39.0	55.5	52.0	126.0
PXL 630-14	630.0	14.0	35.0	45.0	64.5	59.0	146.0
PXL 630-16	630.0	16.0	35.0	45.0	64.5	59.0	146.0
PXL 630-20	630.0	20.0	35.0	45.0	64.5	59.0	146.0
PXL 800-16	800.0	20.0	39.0	50.6	72.5	39.0	171.0

PXL Four Hole Transformer Terminals



Part Number	Cable Size (mm ²)	E Stud Hole Dia Ø (mm)	A ID (mm)	C OD (mm)	D Palm Width (mm)	H Hole Centre (mm)	L Hole Centre (mm)	B Barrel Length (mm)	J Total Length (mm)
PXL 630-10-4H	630.0	4 x 10.0	35.0	45.0	65.0	25.0	35.0	59.0	144.0

PXL Compatible Crimp Tools

CT1.5-16

A hand held four jaw crimping tool, with ratchet mechanism for complete controlled crimp cycle, for use with standard copper tube terminals from 1.5mm up to 16mm².

Meets the compression ratio requirements of BSEN 60352-2:2006, BSEN61238-1:2003 and BS 5G178:1992.

The high precision jaws can be replaced when worn to extend the life of the tool.

Specification.

Jaw set:	Carbon steel SCM440
Frame:	Steel S45C
Handles:	Polypropylene
Length:	225mm
Weight:	0.55kg



1.5mm² to 16mm²



To order this tool with a calibration certificate use catalogue number: **CT1.5-16CAL**

CT10-95i

A hand held indent crimping tool, for use with copper tube terminals from 10mm² up to 95mm².

Manual screw adjustment for easy die selection.

Meets the compression ratio requirements of BSEN 61238-1:2003.

Specification.

Jaw set:	Carbon steel SCM440
Frame:	Nodular cast iron
Handles:	PVC
Length:	570mm
Weight:	2.9kg



10mm² to 95mm²



To order this tool with a calibration certificate use catalogue number: **CT10-95iCAL**

CT120i

A hand held indent crimping tool, for use with copper tube terminals from 16mm² up to 120mm².

Manual screw adjustment for easy die selection.

Meets the compression ratio requirements of BSEN 61238-1:2003.

Tubular steel handles to reduce weight.

Specification.

Jaw set:	Carbon steel SCM440
Frame:	Tubular Steel
Handles:	PVC
Length:	645mm
Weight:	3.5kg



16mm² to 120mm²



To order this tool with a calibration certificate use catalogue number: **CT120iCAL**

PHCT-240KIT-PXL

A hand held hydraulic crimping tool, for use with copper tube terminals from 10mm² up to 240mm².

The two stage hydraulic system ensures rapid advance on low pressure, minimising the number of pump cycles needed to achieve maximum compression.

The kit contains seven interchangeable hexagon die sets: 10/16mm², 25/35mm², 50/70mm², 95/120mm², 150mm², 185mm² and 120mm².

The crimp head can rotate 180° for ease of use.

Supplied in an impact resistant plastic carrying case.

Meets the compression ratio requirements of BSEN 61238-1:2003.

Specification.

Max pressure:	550bar
Oil capacity:	56CC
Max output:	5.2Tonnes
Length:	375mm
Weight:	2.8kgs:



10mm² to 240mm²



To order this tool with a calibration certificate use catalogue number: **PHCT-240KITPXLAL**

PHCT-400KIT-PXL

A hand held hydraulic crimping tool, for use with copper tube terminals from 16mm² up to 400mm².

The two stage hydraulic system ensures rapid advance on low pressure, minimising the number of pump cycles needed to achieve maximum compression.

The kit contains twelve interchangeable hexagon die sets from 16mm² up to 400mm².

The crimp head can rotate 180° for ease of use.

Supplied in an impact resistant plastic carrying case.

Meets the compression ratio requirements of BSEN 61238-1:2003.

Specification.

Max pressure:	700bar
Oil capacity:	147CC
Max output:	11.6Tonnes
Length:	612mm
Weight:	6.5kgs



16mm² to 400mm²



To order this tool with a calibration certificate use catalogue number: **PHCT-400KITPXLAL**

Partex Marking Systems (UK) LTD

61-64 Station Road, Coleshill, Birmingham B46 1JT

Tel: 01675 463670 Fax: 01675 463520 Email: sales@partex.co.uk